
GEORGE BINGHAM
(fl. 1702–1705)

English Aires
Bd. IV / Vol. IV

für Altblockflöte und Basso continuo
for alto recorder and basso continuo

Herausgegeben von Franz Müller-Busch
Generalbassaussetzung von Yo Hirano

Ed. Nr. G 12.048

Reihe I2: per flauto dolce



Girolamo Musikverlag
Franz Müller-Busch, 29223 Celle, Germany
www.girolamo.de

George Bingham (fl. 1702–1705)
40 English Aires and a Chaconne
für Altblockflöte und Basso continuo

Herausgegeben von Franz Müller-Busch

1. A March

Musical score for '1. A March' in bass clef, common time (C). The piece consists of three staves of music. The first staff contains measures 1 through 6. The second staff begins at measure 7 and includes a repeat sign at the end. The third staff begins at measure 14 and concludes with a double bar line and repeat dots. The key signature has one sharp (F#).

2. Air. Allegro

Musical score for '2. Air. Allegro' in bass clef, common time (C). The piece consists of three staves of music. The first staff contains measures 1 through 6. The second staff begins at measure 7 and includes a repeat sign at the end. The third staff begins at measure 12 and concludes with a double bar line and repeat dots.

3. Allegro

Musical score for '3. Allegro' in bass clef, common time (C). The piece consists of three staves of music. The first staff contains measures 1 through 6. The second staff begins at measure 7 and includes a repeat sign at the end. The third staff begins at measure 13 and concludes with a double bar line and repeat dots.

4. Borée

Musical score for '4. Borée' in bass clef, common time (C). The piece consists of two staves. The first staff contains the first six measures, and the second staff contains measures 7 through 12. The key signature has one sharp (F#). The piece concludes with a double bar line and repeat dots.

5. Adagio

Musical score for '5. Adagio' in bass clef, common time (C). The piece consists of two staves. The first staff contains the first five measures, and the second staff contains measures 6 through 11. The key signature has two flats (Bb, Eb). The piece concludes with a double bar line and repeat dots.

6. Gavott

Musical score for '6. Gavott' in bass clef, common time (C). The piece consists of two staves. The first staff contains the first six measures, and the second staff contains measures 7 through 12. The key signature has two flats (Bb, Eb). The piece concludes with a double bar line and repeat dots.

7. English Air

Musical score for '7. English Air' in bass clef, common time (C). The piece consists of two staves. The first staff contains the first six measures, and the second staff contains measures 7 through 12. The key signature has two flats (Bb, Eb). The piece concludes with a double bar line and repeat dots.

8. Hornpipe

Musical score for '8. Hornpipe' in bass clef, 3/2 time. The piece consists of two staves. The first staff contains the first six measures, and the second staff contains measures 7 through 12. The key signature has two flats (Bb, Eb). The piece concludes with a double bar line and repeat dots.

9. Jigg

6

11

10. Air. Allegro

5

9

11. Hornpipe

7

12. Minuet

6

12

18

13. Allegro

5

1. 2.

10

15

20

Detailed description: This is the musical score for '13. Allegro'. It is written in bass clef, common time (C), and the key of B-flat major (one flat). The piece consists of five staves of music. The first staff starts with a treble clef and a key signature change to B-flat major. The second staff contains a first and second ending. The third, fourth, and fifth staves continue the melodic line. The piece concludes with a double bar line and repeat dots.

14. Jigg

5

11

17

Detailed description: This is the musical score for '14. Jigg'. It is written in bass clef, 6/8 time, and the key of B-flat major. The piece consists of three staves of music. The first staff begins with a 7-measure rest. The second and third staves continue the rhythmic and melodic pattern. The piece ends with a double bar line and repeat dots.

15. Minuet

9

17

Detailed description: This is the musical score for '15. Minuet'. It is written in bass clef, 3/4 time, and the key of D major (two sharps). The piece consists of three staves of music. The first staff starts with a treble clef and a key signature change to D major. The second and third staves continue the melodic line. The piece concludes with a double bar line and repeat dots.

16. Trumpet Air

6

11

16

20

17. Hornpipe

7

18. Jigg

5

11

19. Scotch Air

7

20. Allegro



21. Air



22. Jigg



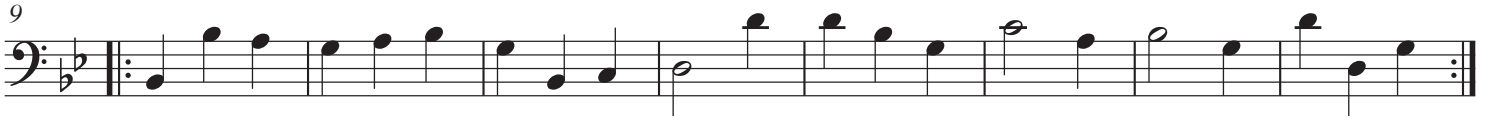
23. Adagio



24. Borée



25. Minuet



26. Allegro



27. Jigg



28. Adagio



29. Minuet





30. Presto



31. Gavott



32. Round O



33. Allegro

6

12

34. Allegro

7

14

20

35. Minuet

9

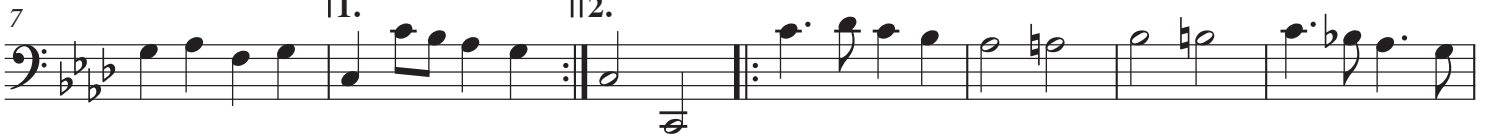
17

36. Jigg

6



37. Adagio



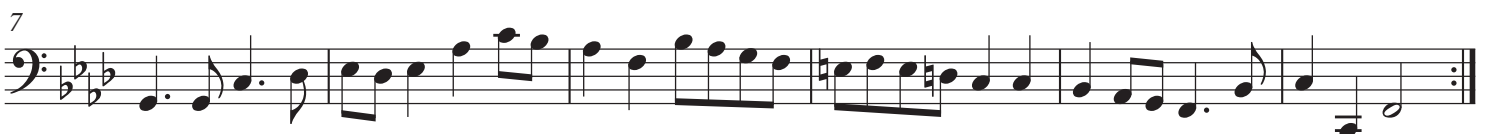
38. Minuet



39. Adagio



40. Adagio

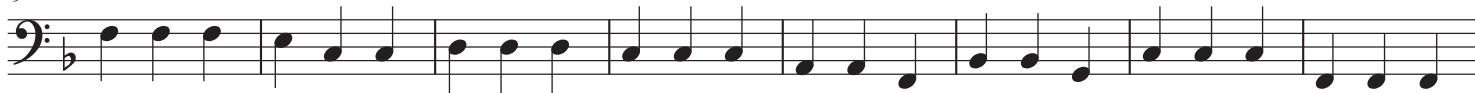


Ciaccona del Signore G. Finger

Allegro



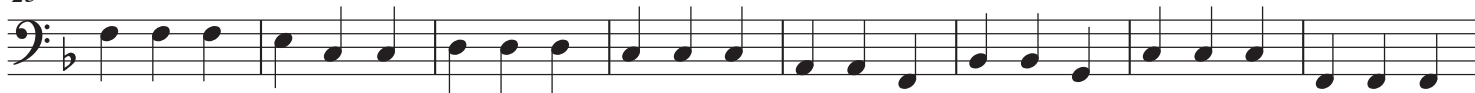
9



17



25



33



41



49



57



65

Largo



73



